

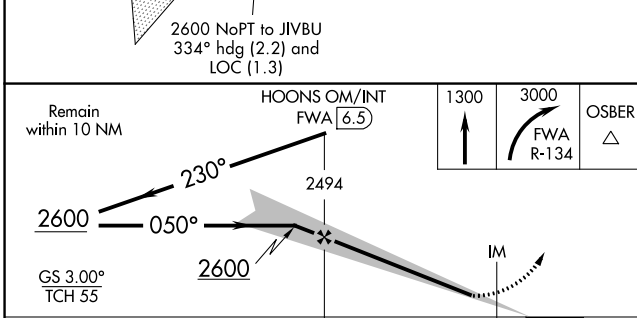
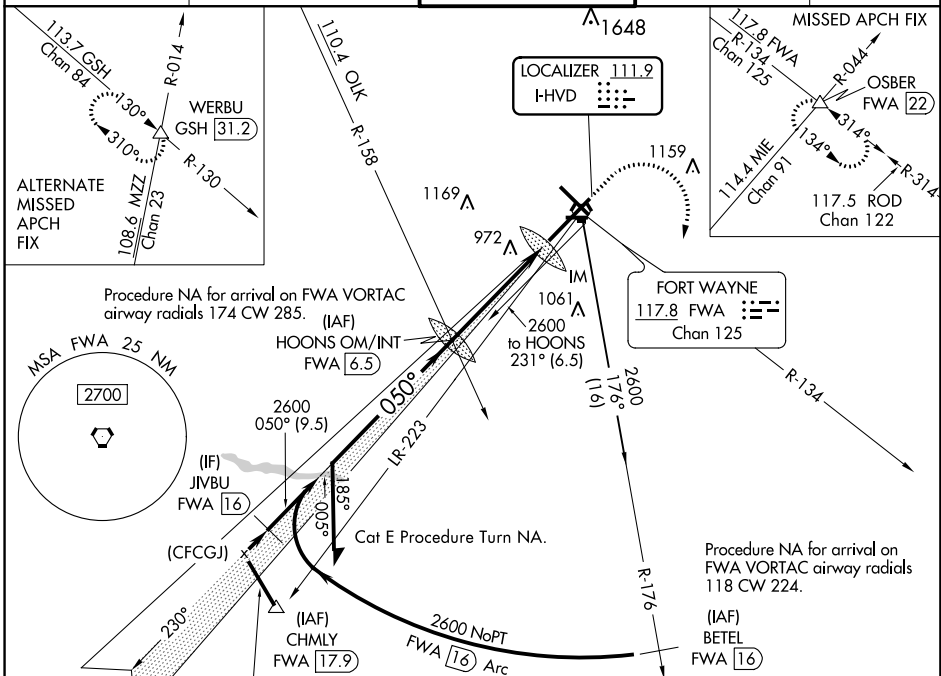
LOC I-HVD 111.9	APP CRS 050°	Rwy Idg 11981
		TDZE 815
		Apt Elev 815

ILS or LOC RWY 5

FORT WAYNE INTL (FWA)

<p>▼ For inop ALS, increase S-ILS 5 Cat E visibility to RVR 4000 and S-LOC 5 Cat C/D/E visibility to 1½ SM.</p> <p>▲ ASR</p>	<p>ALS-F-2</p> <p>MISSED APPROACH: Climb to 1300 then climbing right turn to 3000 on FWA R-134 to OSBER INT/FWA 22 DME and hold.</p>
--	---

<p>ATIS 121.25 349.0</p>	<p>FORT WAYNE APP CON 127.2 284.6</p>	<p>FORT WAYNE TOWER 119.1 269.325</p>	<p>GND CON 121.9 348.6</p>	<p>CLNC DEL 124.75</p>
-------------------------------------	--	--	---------------------------------------	-----------------------------------



ELEV	815	TDZE	815
------	-----	------	-----

833, 921±, 891, 863, 879, 863, 8022 x 150 DOWN, 4001 x 75, TWIR 1000

050° 5.1 NM from FAF, 1098 x 150

TDZ/CL Rwy 5, REIL Rlys 14 and 23, HIRL Rlys 5-23 and 14-32

FAF to MAP 5.1 NM

Knots	60	90	120	150	180
Min:Sec	5:06	3:24	2:33	2:02	1:42

CATEGORY	A	B	C	D	E
S-ILS 5	1015/18 200 (200-½)				1015/24 200 (200-½)
S-LOC 5	1300/24	485 (500-½)	1300/50 485 (500-1)		
C CIRCLING	1300-1	485 (500-1)	1420-1¾ 605 (700-1¾)	1520-2¼ 705 (800-2¼)	1520-2½ 705 (800-2½)

EC-2, 12 OCT 2017 to 09 NOV 2017

EC-2, 12 OCT 2017 to 09 NOV 2017