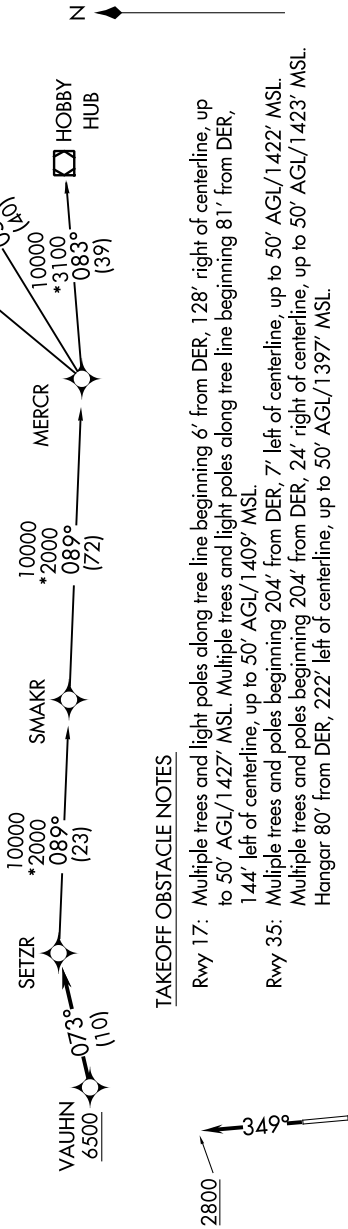


SC-3, 20 JUL 2017 to 17 AUG 2017

REGIONAL DEP CON
125.1 307.0
CTAF 123.0

TAKEOFF MINIMUMS
Rwys 17, 35: Standard

NOTE: RADAR required.
NOTE: DME/DME/IRU or GPS required.
NOTE: For use by turbojet and turboprop aircraft only.
NOTE: RNAV 1



TAKEOFF OBSTACLE NOTES

- Rwy 17: Multiple trees and light poles along tree line beginning 6' from DER, 128' right of centerline, up to 50' AGL/1427' MSL. Multiple trees and light poles along tree line beginning 81' from DER, 144' left of centerline, up to 50' AGL/1409' MSL.
- Rwy 35: Multiple trees and poles beginning 204' from DER, 7' left of centerline, up to 50' AGL/1422' MSL. Multiple trees and poles beginning 204' from DER, 24' right of centerline, up to 50' AGL/1423' MSL. Hangar 80' from DER, 222' left of centerline, up to 50' AGL/1397' MSL.

NOTE: Chart not to scale

DEPARTURE ROUTE DESCRIPTION

TAKEOFF RWY 17: Climb on assigned heading for RADAR vectors to VAUHN, thence ...
TAKEOFF RWY 35: Climb heading 349° to 2800, then on assigned heading for RADAR vectors to VAUHN, thence ...

... on track 073° to SETZR, then on (transition) maintain 6500 or as assigned by ATC. Expect filed altitude 10 minutes after departure.

- HOBBY TRANSITION (SETZR2.HUB)
- HUMBLE TRANSITION (SETZR2.IAH)
- SMAKR TRANSITION (SETZR2.SMAKR)
- WYLSN TRANSITION (SETZR2.WYLSN)

SC-3, 20 JUL 2017 to 17 AUG 2017