

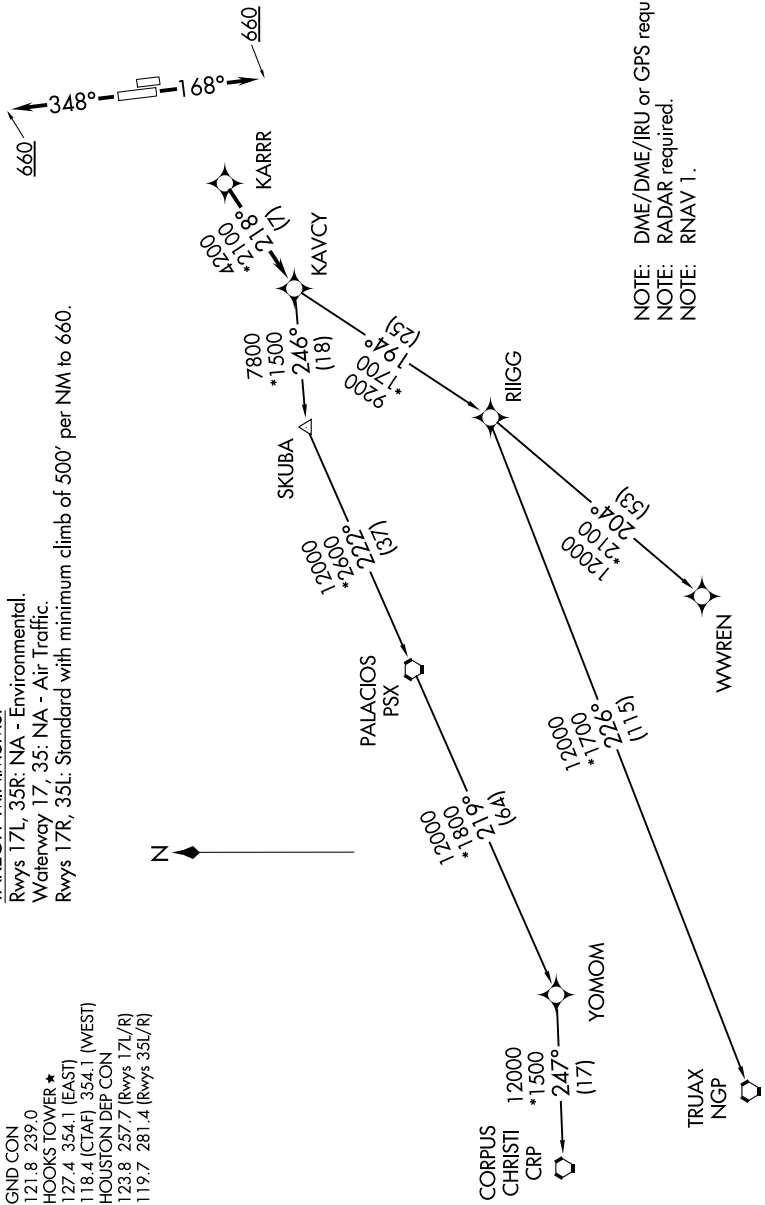
# KARRR FOUR DEPARTURE (RNAV)

**TOP ALTITUDE:  
ASSIGNED BY ATC**

ATIS 128.375  
CLNC DEL 119.45  
GND CON 121.8 239.0  
HOOKS TOWER \* 127.4 354.1 (EAST)  
118.1 18.4 (CTAF) 354.1 (WEST)  
HOUSTON DEP CON 123.8 257.7 (Rwys 17L/R)  
119.7 281.4 (Rwys 35L/R)

**TAKEOFF MINIMUMS:**

Rwys 17L, 35R: NA - Environmental.  
Waterway 17, 35: NA - Air Traffic.  
Rwys 17R, 35L: Standard with minimum climb of 500' per NM to 660.



NOTE: DME/DME/IRU or GPS required.  
NOTE: RADAR required.  
NOTE: RNAV 1.

NOTE: Chart not to scale.

(NARRATIVE ON FOLLOWING PAGE)  
(NOTES CONTINUED ON FOLLOWING PAGE)

SC-5, 20 JUL 2017 to 17 AUG 2017

SC-5, 20 JUL 2017 to 17 AUG 2017