

DUBLIN, VIRGINIA

AL-5084 (FAA)

17061

LOC I-PSK 110.9	APP CRS 058°	Rwy ldg TDZE 6201 2105	Apt Elev 2105
---------------------------	------------------------	--	-------------------------

ILS or LOC Y RWY 6

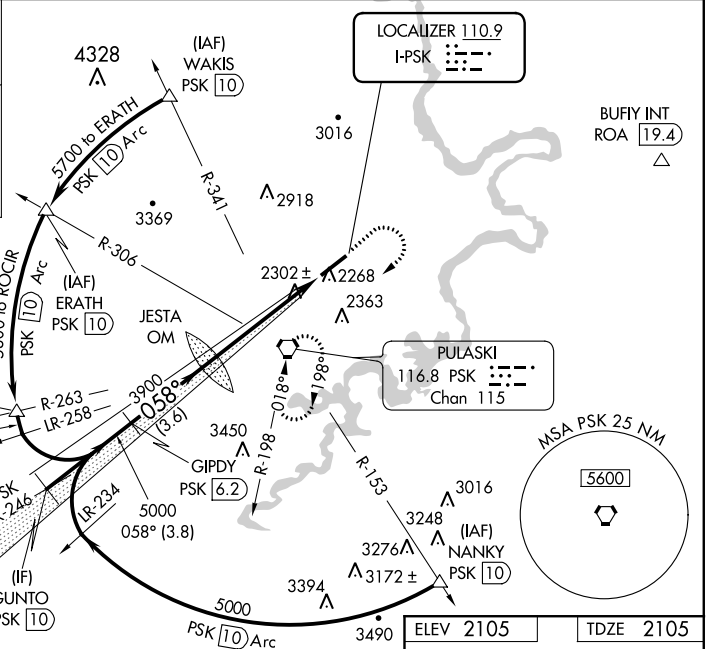
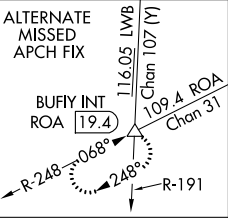
NEW RIVER VALLEY (PSK)

NA DME Required. Visibility reduction by helicopters NA. When local altimeter setting not received, use Blacksburg altimeter setting and increase all DA 36 feet, and all MDA 40 feet. Inoperative table does not apply to S-ILS 6 all Cats and S-LOC 6 Cats A and B. For inoperative MALSR, increase S-LOC 6 Cat C visibility to 1¼ mile.



MISSED APPROACH: Climb to 3000 then climbing right turn to 5000 direct PSK VORTAC and hold.

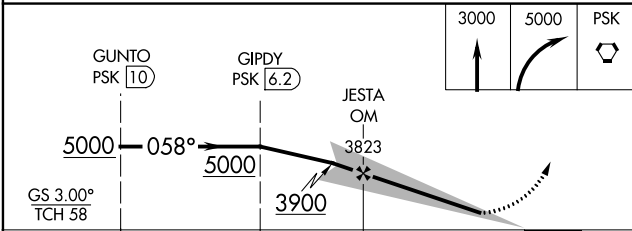
AWOS-3 127.375	ROANOKE APP CON 126.0 339.8	ROANOKE CLNC DEL 121.7	UNICOM 122.7 (CTAF)
--------------------------	---------------------------------------	----------------------------------	-------------------------------



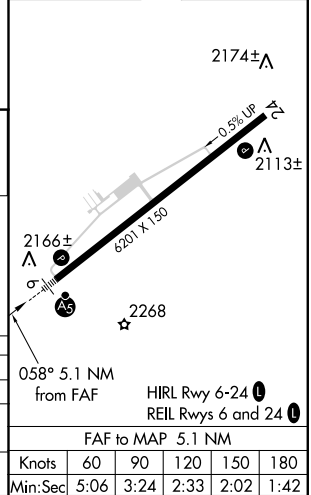
NE-3, 20 JUL 2017 to 17 AUG 2017

NE-3, 20 JUL 2017 to 17 AUG 2017

DME REQUIRED



ELEV 2105	TDZE 2105
-----------	-----------



CATEGORY	A	B	C	D
S-ILS 6		2305-1	200 (200-1)	
S-LOC 6		2560-1	455 (500-1)	
CIRCLING	2620-1	515 (600-1)	2620-1½ 515 (600-1½)	2680-2 575 (600-2)

FAF to MAP 5.1 NM					
Knots	60	90	120	150	180
Min:Sec	5:06	3:24	2:33	2:02	1:42

DUBLIN, VIRGINIA
Orig 30JUN11

37°08'N - 80°41'W

NEW RIVER VALLEY (PSK)

ILS or LOC Y RWY 6