

LOC I-OSH 110.5	APP CRS 184°	Rwy Idg 8002
		TDZE 794
		Apt Elev 808

LOC/DME BC RWY 18

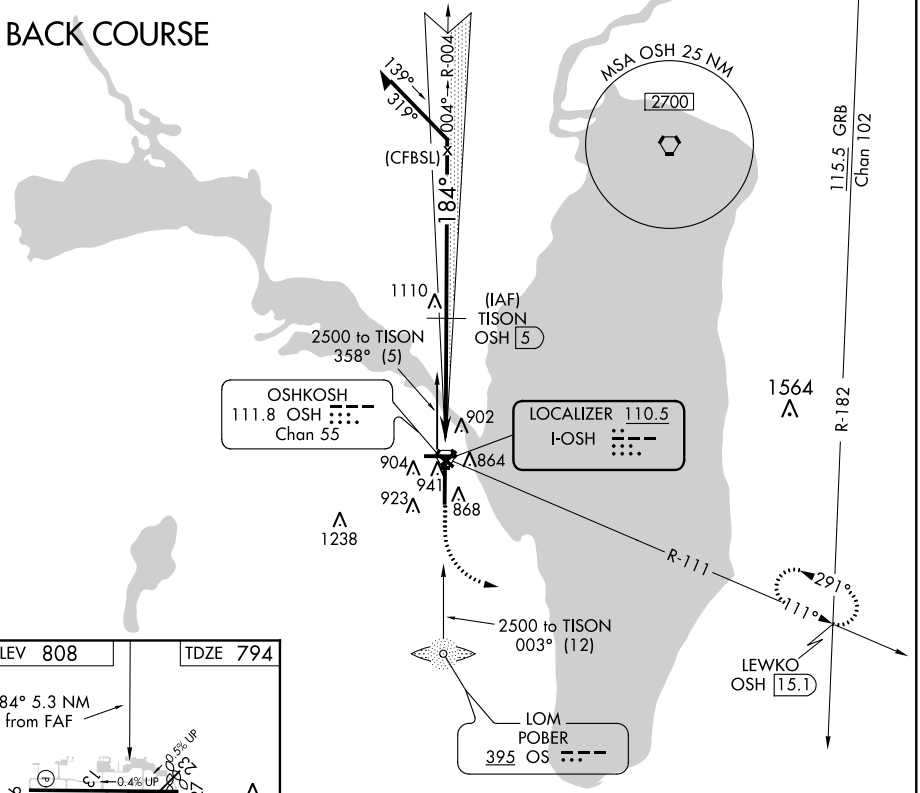
WITTMAN RGNL (OSH)

⚠ Simultaneous reception of I-OSH and OSH DME required. DME from OSH VORTAC. When local altimeter setting not received, use Fond Du Lac altimeter setting and increase all MDA 40 feet; increase Circling Cat D visibility ¼ mile. Circling to Rwy 5, 23, and 31 NA at night. Helicopter visibility reduction below ¾ SM NA.

MISSED APPROACH: Climb to 1300 then climbing left turn to 3000 on OSH R-111 to LEWKO INT/OSH 15.1 DME and hold.

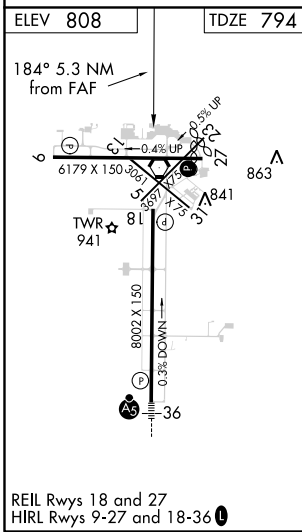
ATIS 125.9	MILWAUKEE APP CON 127.0 263.075	OSHKOSH TOWER ★ 118.5 (CTAF) 290.9	GND CON 121.9	UNICOM 122.95
----------------------	---	--	-------------------------	-------------------------

BACK COURSE



EC-3, 20 JUL 2017 to 17 AUG 2017

EC-3, 20 JUL 2017 to 17 AUG 2017



ELEV 808	TDZE 794				
<p>184° 5.3 NM from FAF</p> <p>6179 X 150 (36)</p> <p>81 TWR ★</p> <p>800 X 150</p> <p>800 X 200</p> <p>36</p>		<p>1300</p> <p>3000</p> <p>OSHKOSH R-111</p>	<p>LEWKO</p> <p>△</p>	<p>TISON OSH (5)</p> <p>004°</p> <p>2500</p>	<p>Remain within 10 NM</p>
<p>ZILMU OSH (0.3)</p> <p>OSHKOSH VORTAC</p> <p>2500</p> <p>2.97° TCH 47</p> <p>0.6 NM</p> <p>4.7 NM</p> <p>Disregard glide slope indications.</p>					
CATEGORY	A	B	C	D	
S-18	1240-1	446 (500-1)	1240-1 ³ / ₈	446 (500-1 ³ / ₈)	
CIRCLING	1280-1	1300-1	1360-1 ¹ / ₂	1440-2	
	472 (500-1)	492 (500-1)	552 (600-1 ¹ / ₂)	632 (700-2)	