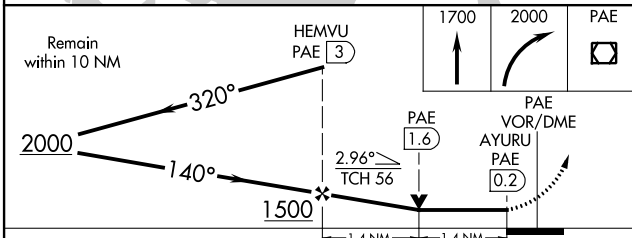
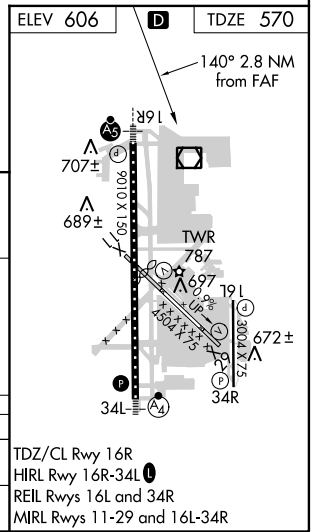
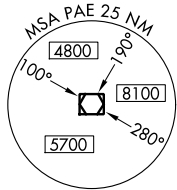
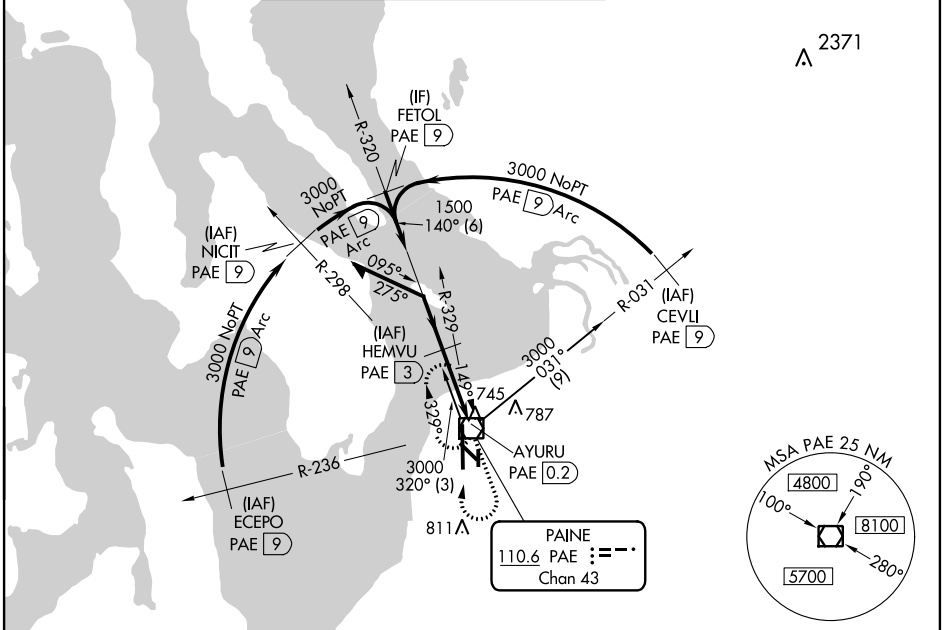


VOR/DME PAE 110.6 Chan 43	APP CRS 140°	Rwy Idg TDZE Apt Elev	9010 570 606
---	------------------------	-----------------------------	---

VOR/DME RWY 16R

SNOHOMISH COUNTY (PAINE FIELD) (P.A.E)

		MISSED APPROACH: Climb to 1700 then climbing right turn to 2000 direct PAE VOR/DME and hold.				
ATIS 128.65	SEATTLE APP CON 128.5 306.9	PAINE TOWER* (E of Rwy 16L-34R) (W of Rwy 16R-34L) 120.2 256.7 132.95 (CTAF) 256.7		GND CON 121.8 339.8	CLNC DEL 126.75	UNICOM 122.95



CATEGORY	A	B	C	D
S-16R	1060/24 490 (500-1/2)		1060/40 490 (500-3/4)	1060/50 490 (500-1)
CIRCLING	1100-1	494 (500-1)	1100-1 1/2 494 (500-1 1/2)	1180-2 574 (600-2)

NW-1, 20 JUL 2017 to 17 AUG 2017

NW-1, 20 JUL 2017 to 17 AUG 2017