

# RNAV (GPS) Z RWY 16R

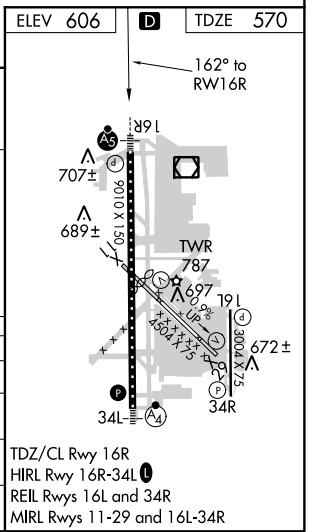
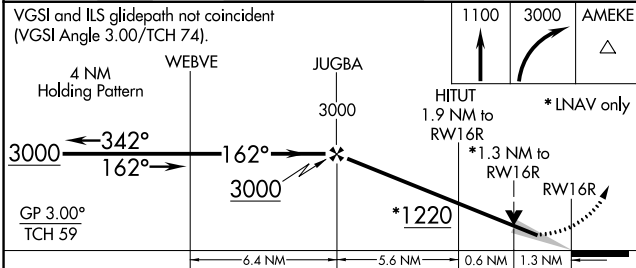
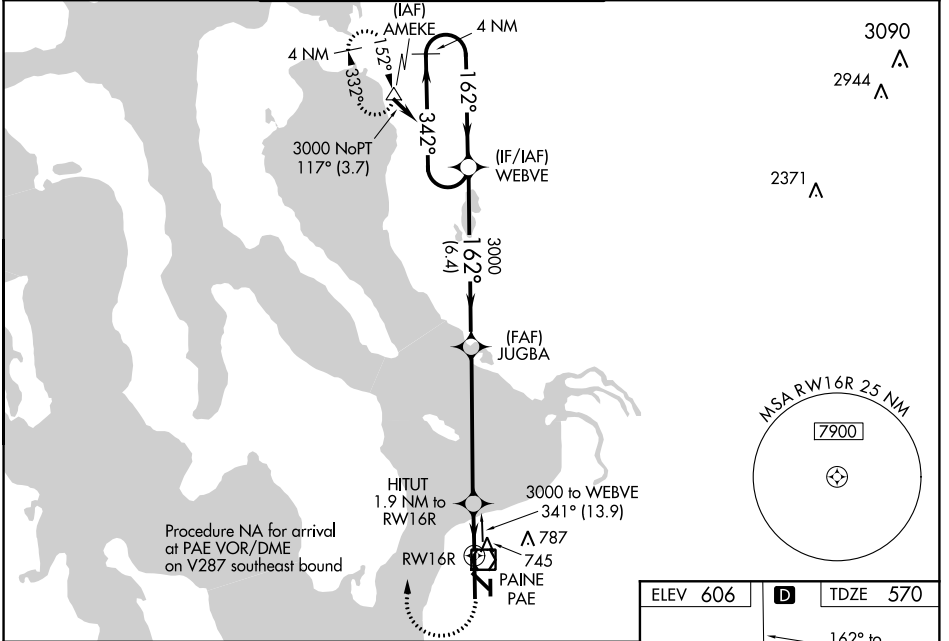
SNOHOMISH COUNTY (PAINE FIELD) (P.A.E.)

WAAS CH <b>61129</b> <b>W16A</b>	APP CRS <b>162°</b>	Rwy Idg TDZE Apt Elev	<b>9010</b> <b>570</b> <b>606</b>
--	------------------------	-----------------------------	---

**⚠** For uncompensated Baro-VNAV systems, LNAV/VNAV NA below -16°C (4°F) or above 40°C (104°F). DME/DME RNP-0.3 NA. Baro-VNAV and VDP NA when using Seattle-Tacoma Intl altimeter setting. When using Seattle-Tacoma Intl altimeter setting; for inoperative MALS/R, increase LPV all Cats visibility to RVR 4500. When local altimeter setting not received use Seattle-Tacoma Intl altimeter setting and increase all DA 88 feet and all MDA 100 feet; increase LNAV/VNAV all Cats visibility to RVR 6000, LNAV Cat C and D visibility to RVR 6000 and Circling Cat C visibility to 1¾ miles.

**MALS/R**  
**MISSED APPROACH:**  
Climb to 1100 then climbing right turn to 3000 direct AMEKE and hold.

ATIS <b>128.65</b>	SEATTLE APP CON <b>128.5 306.9</b>	PAINE TOWER * (E of Rwy 16L-34R) (W of Rwy 16R-34L) <b>120.2 256.7 132.95 (CTAF) 256.7</b>	GND CON <b>121.8 339.8</b>	CLNC DEL <b>126.75</b>	UNICOM <b>122.95</b>
-----------------------	---------------------------------------	--	-------------------------------	---------------------------	-------------------------



CATEGORY	A	B	C	D
LPV DA		770/24	200 (200-½)	
LNAV/VNAV DA		963/40	393 (400-¾)	
LNAV MDA	1060/24	490 (500-½)	1060/50	490 (500-1)
CIRCLING	1100-1	494 (500-1)	1100-1½ 494 (500-1½)	1160-2 554 (600-2)

NW-1, 20 JUL 2017 to 17 AUG 2017

NW-1, 20 JUL 2017 to 17 AUG 2017