

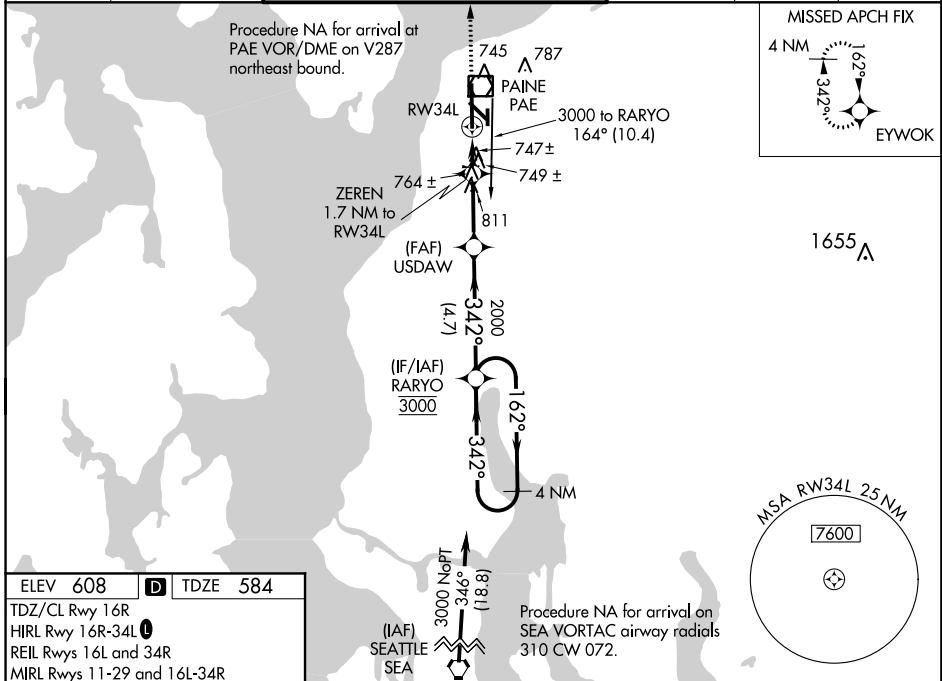
APP CRS	Rwy Idg	<b>9010</b>
<b>342°</b>	TDZE	<b>584</b>
	Apt Elev	<b>608</b>

# RNAV (GPS) RWY 34L

SNOHOMISH COUNTY (PAINE FIELD) (P.A.E.)

<p><b>▽</b> DME/DME RNP-0.3 NA. Circling Rwy 34R NA at night. Rwy 34L helicopter visibility reduction below 3/4 SM NA. Rwy 34R helicopter visibility reduction below 1 SM NA. VDP NA when using Seattle-Tacoma Intl altimeter setting. When local altimeter not received, use Seattle-Tacoma Intl altimeter setting and increase all MDA's 100 feet and increase LNAV Cats C and D visibility to 1 1/4 SM and Circling Cat C to 1 1/4 SM. For Inop ALS, increase Cats C and D visibility to 1 1/2 SM. For inop ALS when using Seattle-Tacoma Intl altimeter setting, increase Cats C and D visibility to 1 1/2 SM.</p>	<p><b>MALSF</b></p>	<p><b>MISSED APPROACH:</b> Climb to 3000 direct EYWOK and hold.</p>

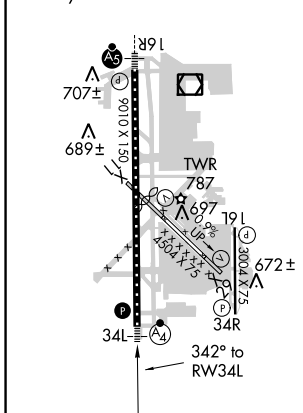
ATIS	SEATTLE APP CON	PAINE TOWER*		GND CON	CLNC DEL	UNICOM
<b>128.65</b>	<b>128.5 306.9</b>	(E of Rwy 16L-34R)	(W of Rwy 16R-34L)	<b>121.8 339.8</b>	<b>126.75</b>	<b>122.95</b>
		<b>120.2 256.7</b>	<b>132.95</b> (CTAF) <b>0 256.7</b>			



NW-1, 20 JUL 2017 to 17 AUG 2017

NW-1, 20 JUL 2017 to 17 AUG 2017

ELEV 608	<b>D</b>	TDZE 584
TDZ/CL Rwy 16R		
HIRL Rwy 16R-34L		
REIL Rws 16L and 34R		
MIRL Rws 11-29 and 16L-34R		



3000	<b>EYWOK</b>	VGSI and descent angles not coincident (VGSI Angle 3.00/TCH 75).	4 NM Holding Pattern
		ZEREN 1.7 NM to RW34L	USDAW
		1.1 NM to RW34L	1160 2000
1.1 NM	0.6 NM	2.6 NM	4.7 NM
CATEGORY	A	B	C
LNAV MDA	1000-3/4 416 (400-3/4)		1000-1 416 (400-1)
<b>C</b> CIRCLING	1100-1 492 (500-1)		1120-1 1/2 512 (600-1 1/2) 1160-2 552 (600-2)