

LOC I-PAE 109.3	APP CRS 162°	Rwy Idg TDZE Apt Elev	9010 570 606
---------------------------	------------------------	-----------------------------	---

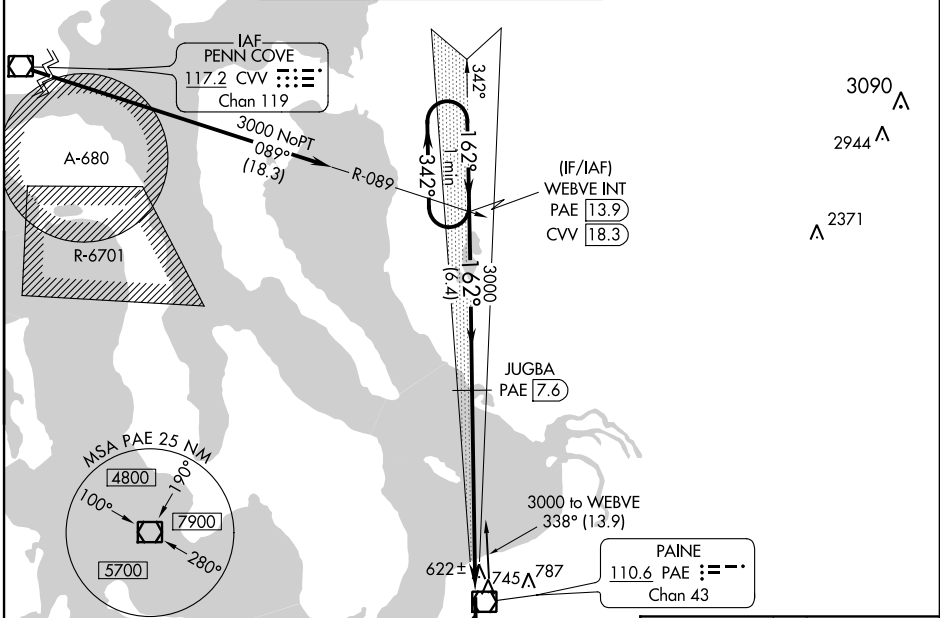
ILS Z RWY 16R (SA CAT II)

SNOHOMISH COUNTY (PAINE FIELD) (P.A.E)

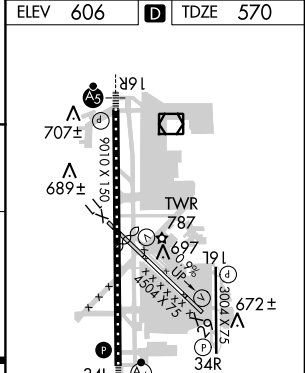
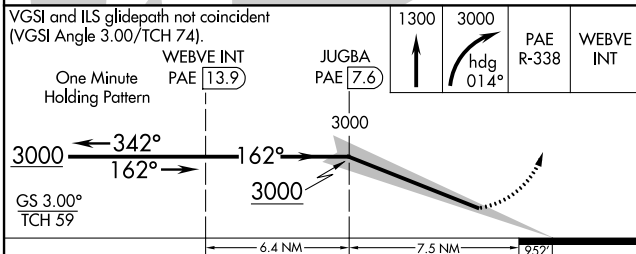
⚠ DME from PAE VOR/DME. Simultaneous reception of I-PAE and PAE DME required. Reduced lighting requires specific OPSPEC, MSPEC or LOA approval and use of autoland or HUD to touchdown. NA when control tower is closed.

MALSRS MISSED APPROACH: Climb to 1300 then climbing right turn to 3000 on heading 014° and PAE VOR/DME R-338 to WEBVE INT/PAE 13.9 DME and hold.

ATIS 128.65	SEATTLE APP CON 128.5 306.9	PAINE TOWER* (E of Rwy 16L-34R) (W of Rwy 16R-34L) 120.2 256.7 132.95 (CTAF) 256.7	GND CON 121.8 339.8	CLNC DEL 126.75	UNICOM 122.95
-----------------------	---------------------------------------	---	-------------------------------	---------------------------	-------------------------



ELEV 606	TDZE 570
----------	----------



CATEGORY	A	B	C	D
S-ILS 16R	RA 116/12 100 DA 670			

SA CATEGORY II ILS-SPECIAL AIRCREW & AIRCRAFT CERTIFICATION REQUIRED

TDZ/CL Rwy 16R
HIRL Rwy 16R-34L
REIL Rwy 16L and 34R
MIRL Rwy 11-29 and 16L-34R

NW-1, 20 JUL 2017 to 17 AUG 2017

NW-1, 20 JUL 2017 to 17 AUG 2017