


LOC I-PAE 109.3	APP CRS 162°	Rwy Idg 9010
		TDZE 570
		Apt Elev 606

ILS or LOC/DME Y RWY 16R

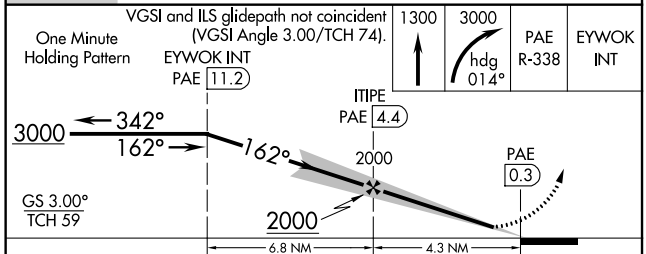
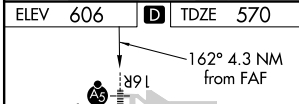
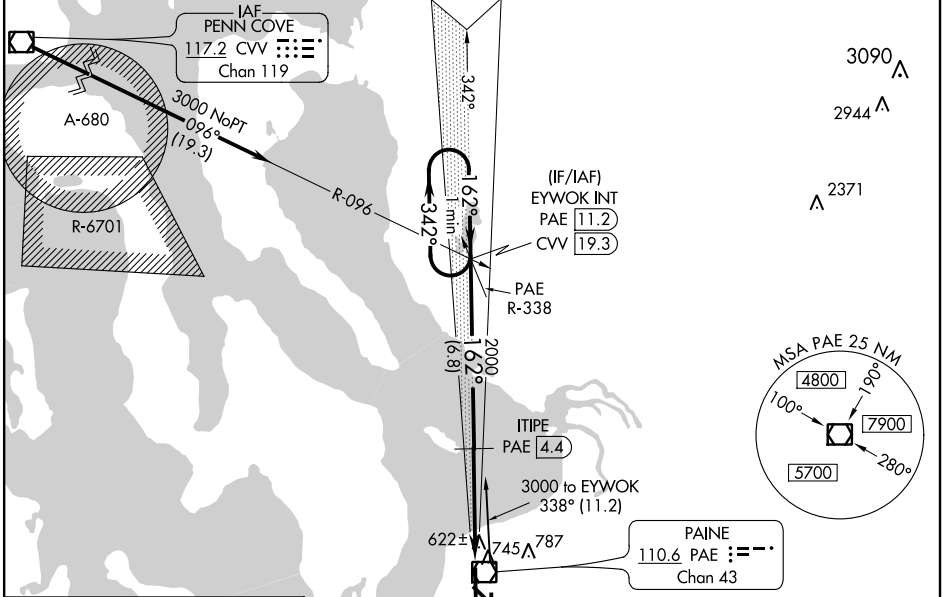
SNOHOMISH COUNTY (PAINE FIELD) (P.A.E.)

⚠ When local altimeter setting not received, use Seattle-Tacoma Intl altimeter setting and increase all DA 88 feet and all MDA 100 feet. When using Seattle-Tacoma Intl altimeter setting; for inoperative MALSRS, increase S-ILS 16R all Cats visibility to RVR 4500. DME from PAE VOR/DME. Simultaneous reception of I-PAE and PAE DME required.

MALSRS 

MISSED APPROACH: Climb to 1300 then climbing right turn to 3000 on heading 014° and PAE VOR/DME R-338 to EYWOK INT/PAE VOR/DME 11.2 DME and hold.

ATIS 128.65	SEATTLE APP CON 128.5 306.9	PAINE TOWER * (E of Rwy 16L-34R) (W of Rwy 16R-34L) 120.2 256.7 132.95 (CTAF) 256.7	GND CON 121.8 339.8	CLNC DEL 126.75	UNICOM 122.95
-----------------------	---------------------------------------	--	-------------------------------	---------------------------	-------------------------



CATEGORY	A	B	C	D
S-ILS 16R	770/24	200 (200-1/2)		NA
S-LOC 16R	940/24	370 (400-1/2)		NA
CIRCLING	1100-1	494 (500-1)		NA

TDZ/CL Rwy 16R
HIRL Rwy 16R-34L
REIL Rws 16L and 34R
MIRL Rws 11-29 and 16L-34R

NW-1, 20 JUL 2017 to 17 AUG 2017

NW-1, 20 JUL 2017 to 17 AUG 2017